

Liver Biopsy Procedure

Prep Instructions

Please follow the instructions below for your upcoming Liver Biopsy Procedure. Please also be sure you have scheduled a two week follow-up appointment after your procedure.



DISCUSS MEDICATIONS and any health conditions you have with your doctor. Your doctor will provide instructions for how to appropriately adjust your medications prior to your procedure. Instructions may include the following changes:

- If you take **Phentermine**, **stop** 2 weeks prior to your procedure.
- If you take **INSULIN** please check with the doctor that prescribes this for you about adjusting the dose prior to your test. The morning of your procedure please take ½ the normal dose.
- If you take **Iron**, **stop** for 3 days prior to the procedure including multivitamins with iron supplements.
- If you are on a GLP 1 receptor Agonists medication that is used weekly such as Dulaglutide/Trulicity, Semaglutide/Ozempic, Tirzepatide/Mounjaro you **MUST** hold this medication 1 week prior to your procedure.
- If you are on a GLP 1 receptor Agonists medication that is used daily such Semaglutide/Rybelsus, Liraglutide/Victoza/Saxenda, Lixisenatide/Adlyxin, Exenatide/Byetter you **MUST** hold this medication **24 hours** prior to your procedure.
- If you are on an SGLT-2 medication such as - Bexagliflozin (Brenzavvy), canagliflozin (Invokana), Dapagliflozin (Farxiga), Empagliflozin (Jardiance), Ertugliflozin, Sotagliflozin you **MUST** hold this medication for **4 days** prior to your procedure.
- If you are on an Opioid Antagonist medication such as - 6520Naltrexone and combinations (suboxone), Vivitrol you **MUST** hold this medication for **3 days** prior to your procedure.
- If you take **blood pressure, seizure, or cardiac** medicines in the morning, please take them at 6 AM with a tiny sip of water. Take no other medicines unless directed to do so. No gum or mints.

DO NOT HAVE ANYTHING TO EAT OR DRINK AFTER MIDNIGHT THE NIGHT BEFORE YOUR PROCEDURE



ARRANGE for a friend or family member to drive you home after the colonoscopy, as you will still be drowsy from sedation and it is unsafe to drive.

- You must have an adult accompany you home the day of your procedure, even if you take a cab. The medical procedure staff must be able to contact whoever will accompany you. If this person cannot be confirmed prior to the procedure, your procedure will be rescheduled for your safety.
- You should not drive a car, operate machinery, or make any legal decisions until the day after your procedure.
- Sedation may cause temporary loss of memory. Be aware that you may not remember results given to you by your doctor following the procedure.
- Please note that like surgery, procedures take varying amounts of time depending on their complexity. While we try to remain on schedule, occasional prolonged procedures may delay subsequent ones. We will try to keep you advised of any delays.

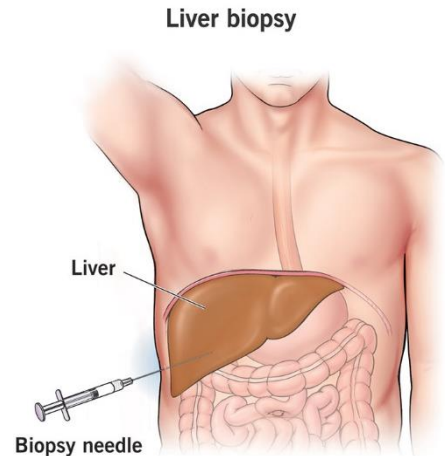
WHAT IS A LIVER BIOPSY AND WHY DO I NEED TO HAVE IT?

A liver biopsy is a minor procedure to take a tiny tissue sample from your liver through a hollow needle. Healthcare providers do this in a few different ways, depending on your condition. After the procedure, a pathologist analyzes the tissue sample in a lab to help diagnose and stage various liver diseases.

Reasons for a liver biopsy include:

- **Diagnosis.** Healthcare providers consider liver biopsy to be the gold standard for diagnosing many liver diseases and lesions that other tests might suggest but can't confirm. It can definitively confirm or rule out these conditions. Sometimes it's the only way to do this.
- **Staging.** You may also have a liver biopsy to check how your chronic liver disease is progressing. A biopsy can determine the level of fibrosis (scarring) in your liver and score it (F0-F4). This helps to forecast your prognosis, inform your treatment plan and check how well it's working.

Please note that like surgery, procedures take varying amounts of time depending on their complexity. While we try to remain on schedule, occasional prolonged procedures may delay subsequent ones. We will try to keep you advised of any delays.



Cancellation Policy/No Show Policy

Cancellation/No Show Policy for Doctor Appointment/Procedure

We understand that there are times when you must miss an appointment due to emergencies or obligations for work or family. However, when you do not call to cancel an appointment, you may be preventing another patient from getting much needed treatment. Conversely, the situation may arise where another patient fails to cancel and we are unable to schedule you for a visit, due to a seemingly "full" schedule. If an appointment/procedure is not cancelled at least 14 business days in advance you may be charged a \$250 fee; this will not be covered by your insurance company.

Account Balances

We will require that patients with self-pay balances pay their account balances prior to receiving further services by our practice. Patients who have questions about their bills or who would like to discuss a payment plan option may call and ask to speak to a business office representative with whom they can review their account and concerns.

Patients with balances over \$100 must make payment arrangements prior to future appointments being made.

Facility Locations

<p><u>Research Medical Center-Patient Registration</u> 2330 E Meyer Blvd, Suite 102 Kansas City, MO 64132</p>	<p><u>Overland Park Regional Medical Center</u> 10500 Quivera Road Overland Park, KS 66215</p>	<p><u>Menorah Medical Center – Bldg C</u> 5701 W 119th St. Overland Park, KS 66209</p>
<p><u>Overland Park Surgical Center</u> 10601 Quivera Road Suite 100 Overland Park, KS 66215</p>	<p><u>Mid America Surgical Institute</u> 5525 W 119th St. Suite 100 Overland Park KS 66209</p>	<p><u>South Kansas City Surgicenter</u> 10730 Nall Ave, Suite 100 Overland Park KS 66211</p>